



HANDICAP TOILET SYSTEM



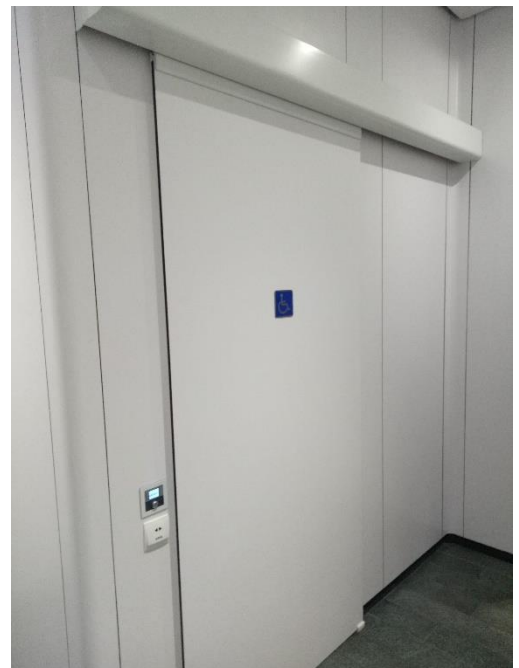
ACCESSCO realised the needs of providing easy to use, convenience and safety in handicap toilet requirements. ACCESSCO Handicap Toilet System is designed with a visual friendly LCD Indicators coupled with colour differentiation and universally easy to understand symbol for any user.

Even if one is visually impaired, the system is built-in with a beeping sound to provide an indication that the toilet is locked.

In the event of emergency, the system comes with an emergency over-ride key to unlock the door. It is also built-in with a fail-safe system to ensure the toilet door will be free for rescue purposes if mandatory at the point of time.

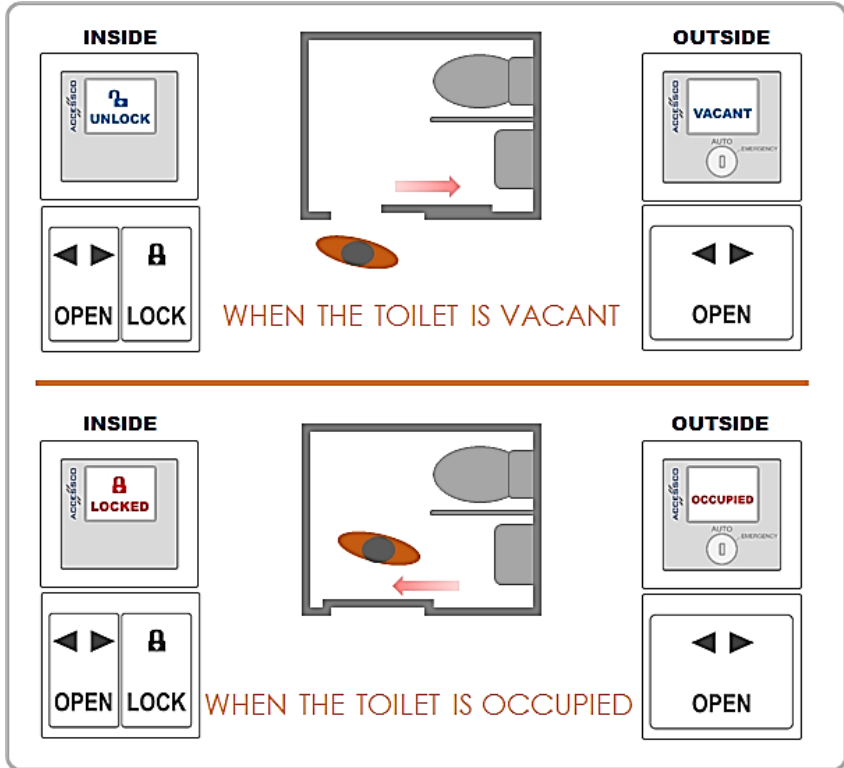
Not solely as a handicap toilet, the ACCESSCO Handicap Toilet System is also suitable for offices. Many offices with a single toilet wants to ensure no knocking on the toilet door or shouting to ask if someone is occupying it.

Worst scenario is that someone may try open the door while it is occupied. Having the ACCESSCO Handicap Toilet System will save all embarrassing moment.



Handicap Toilet System – How It Works

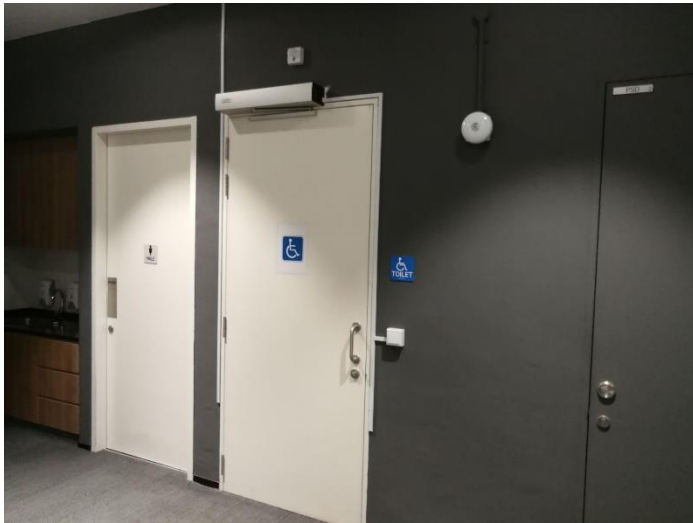
- ▶ FRIENDLY
- ▶ CONVENIENT
- ▶ ASSURANCE
- ▶ CONFIDENT
- ▶ SAFE



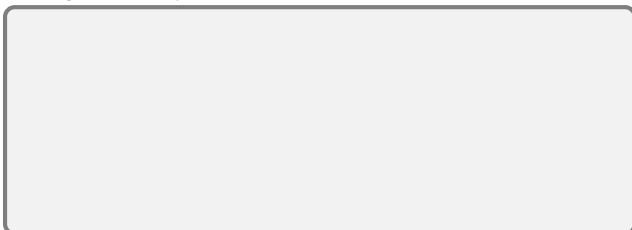
LOCKING OPTION WHEN LOCK BUTTON IS ACTIVATED :

- 1) Door Will Start Closing & Lock When Is Fully Closed
- 2) Door Can Only Be Lock When The Door Is Fully Closed

In The Event Of Power Failure, Door Will Be Unlocked But Remains Close. Usually, Handicap Toilet Will Have An Emergency Call Button (By Others)



REPRESENTED BY :



ACCESSCO LIMITED | United Kingdom | © 2019 ACCESSCO UK
 Rights Reserved For Changes Without Prior Notice. For
 Information & Illustration Purposes Only, Use At Own Discretion